

SIO-EX-MC-SE-SINNNNNN-xx

Ambient Temperature Sensor

Introduction

The Sent.io™ DIRECT2CLOUD I/O gateway is perfect for stand-alone IoT monitoring in a variety of applications including building management, oil and gas, water/wastewater and much more.

Sent.io™ has multiple power options to fit any application, including internal battery, external 8-32V DC, and solar. When powered from a field replaceable battery, it is a truly wireless IoT gateway that can sample multiple I/O or sensors every 15 minutes and report to the cloud every 8 hours or when an alert condition exists. When powered from external DC (8- 24V), Sent.io™ continuously samples all I/O to check for alert conditions, providing near instant alert notifications. Samples are recorded and reported to the cloud every 5 minutes. If uptime reliability is a primary concern, Sent.io™ can be powered from our Whisker.io® MicroUPS™ which provides up to 48 hours of battery backed run time. When Sent.io™ is powered from the MicroUPS™, it can send text/email notifications when main power is lost and restored.

Sent.io™ can be configured with a variety of I/O options including analog and digital inputs and outputs, Modbus RTU (RS485), and our entire line of 2Smart™ digital sensors which currently include digital temperature, temperature/humidity/pressure, and 3-5M tank level sensors.

Any 3rd party Modbus enabled product can be brought into the Whisker.io® cloud platform using Sent.io™ as a gateway, allowing your customers to control their building and industrial automation systems from anywhere in the world using any mobile device.

Sent.io™ communicates securely to the cloud using a built in 4G Cat M1 modem so it does not require access to customer networks or support from customer IT personnel. Our proprietary Cat M1-MC™ technology allows Sent.io™ to seamlessly switch between AT&T, T-Mobile, and Verizon, ensuring reliability without the need for separate SIM cards.

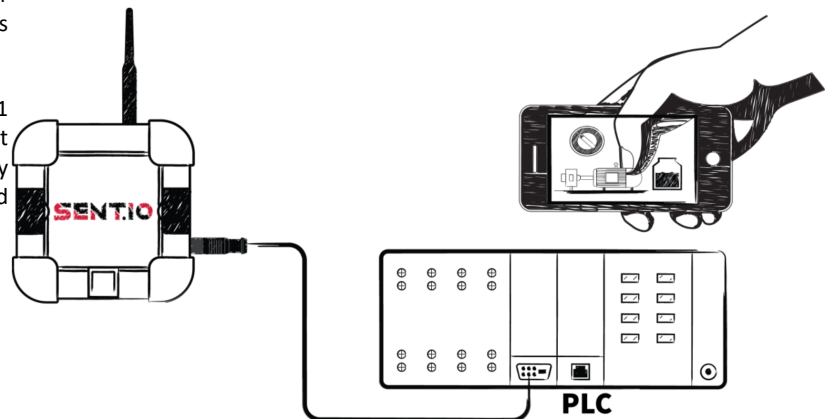
Ordering Information

| Part Number | Description |
|--------------------------|----------------------------|
| SIO-EX-MC-SE-SINNNNNN-xx | Ambient Temperature Sensor |
| SIO-EX-MC-SE-SI2NNNNN-xx | 2Smart |
| SIO-EX-MC-SE-SI4NNNNN-xx | Dual 4-20mA analog in |
| SIO-EX-MC-SE-SI5NNNNN-xx | Dual 0-5V analog in |
| SIO-EX-MC-SE-SIMNNNNN-xx | Modbus RTU RS-485 |

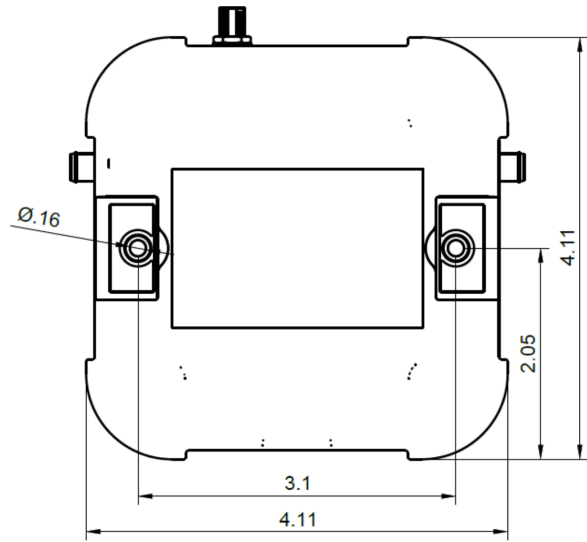
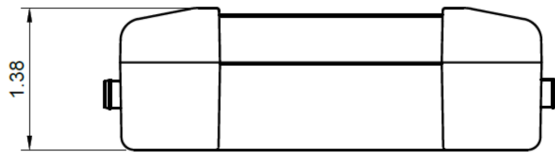
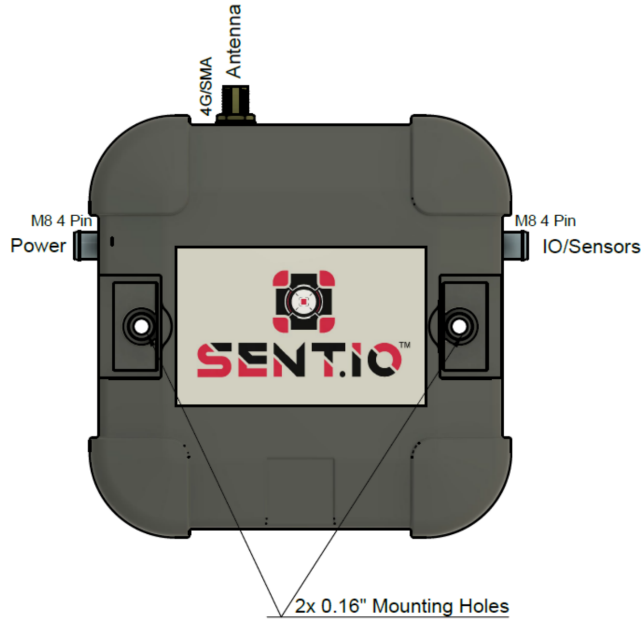
Features

- Multiple I/O configurations— analog, digital, Modbus RTU, 2Smart Interface
- Multiple Power Options— Battery, DC, MicroUPS
- CatM1-MC - Works with Verizon, AT&T, & T-Mobile
- Direct2Cloud air-gapped communications
- IP67 rated outdoor enclosure (DIN Rail, wall/pole mount)
- Simple to install, easy to use
- 24/7 remote monitoring /control from anywhere
- Enterprise grade solution—use on phone, tablet, or PC
- Smart text/email alerts with user defined thresholds
- Custom dashboards and user-interfaces
- Direct2Cloud™ - air gapped communications, AT&T 4G

Sample Application



This simple application shows how any PLC can be remotely monitored and controlled from anywhere in the world using a mobile phone, tablet or laptop. This application is easy to setup—check out support.d6labs.com to learn more.



* Dimensions are in inches

Product Attributes

| Type | Description |
|---|--|
| Operating Temperature Range | -40 - 185°F |
| I/O | See individual Sent.io™ data sheets for specifications on configured I/O |
| Power Supply (External DC Power Option) | 8-32 VDC |
| Power Supply Current--Average | 50mA (typical) |
| Power Supply Current--Peak ² | 1A (typical) |
| Battery Backup (MicroUPS Power Option) ¹ | 48Hours (typical) |
| Battery Life ¹ | 2-10 Years (typical 8 years) |
| Battery Backup (MicroUPS Power Option) ¹ | 48Hours (typical) |

1) Depends on installed sensors and operating environment

2) Peak current at 3.6V