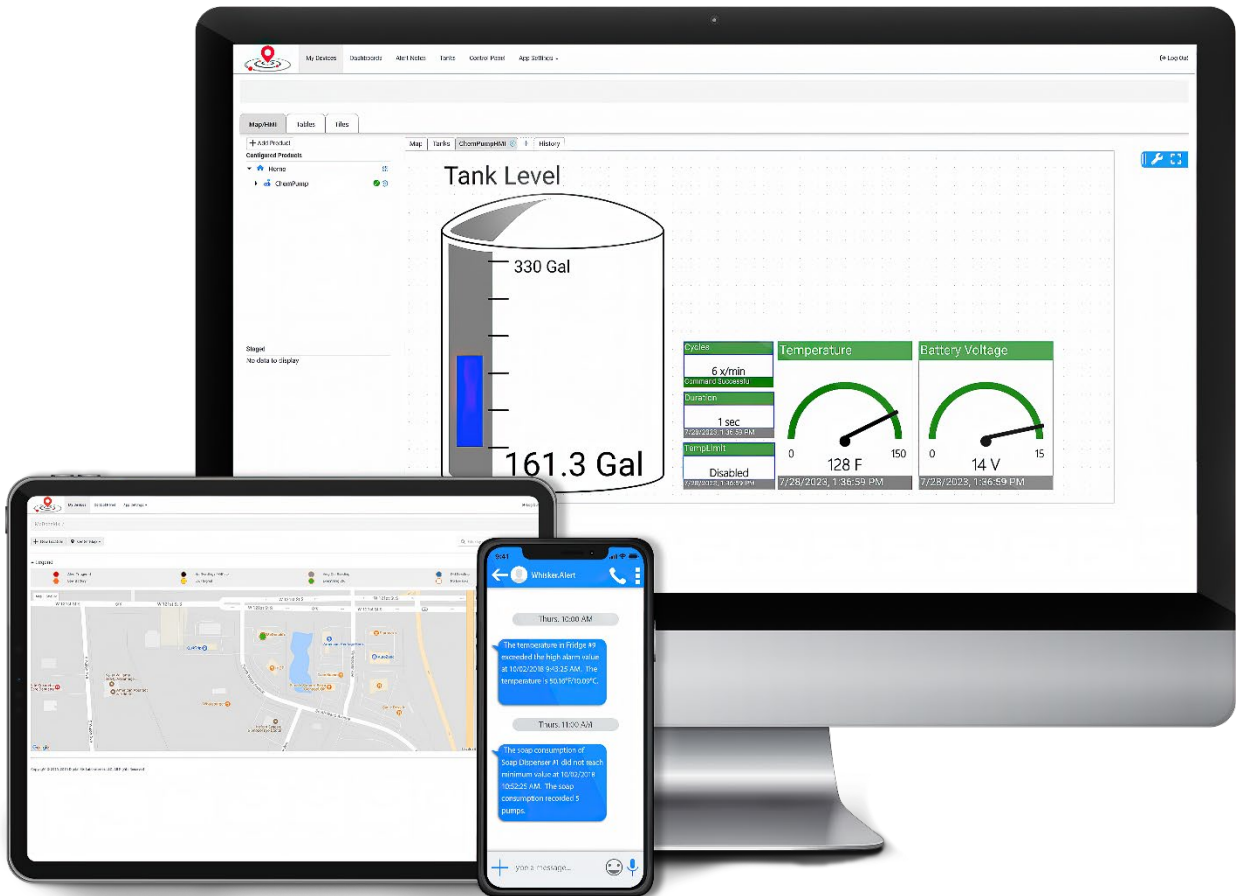




# Whisker.io®



## IoT Command Center Data Sheet



**D6 Labs™**  
Engineered IoT Solutions



# Drill Down Interface

Our map-based drill down interface shows all your locations with color and shape coded icons on a map so you can quickly identify locations that have problems. Click on the location to drill down and see data for the devices at that location.

- ✓ Common visual language - easy to learn and use.
- ✓ Enterprise grade - designed to manage devices at thousands of locations.
- ✓ Fast drill down - get to your data with 2 clicks regardless of the number of devices or locations.



# Custom HMI

Build custom human/machine interfaces (HMI) in seconds with our drag and drop editor. Design one HMI and use it on your laptop, tablet, and phone - our mobile first design approach ensure it will look good no matter what screen size you have. Our HMIs let you monitor and control your equipment in the field.

- ✓ **Drag and Drop** - anyone can build HMIs in seconds.
- ✓ **Monitor/Control** - check equipment status and change operating parameters w/o leaving your desk.
- ✓ **Mobile First** - looks beautiful and works great regardless of screen size or device type.



# Custom Dashboards

Create custom dashboards to look at data historically. Use the historical data to find anomalies, track and identify trends, and troubleshoot problems.

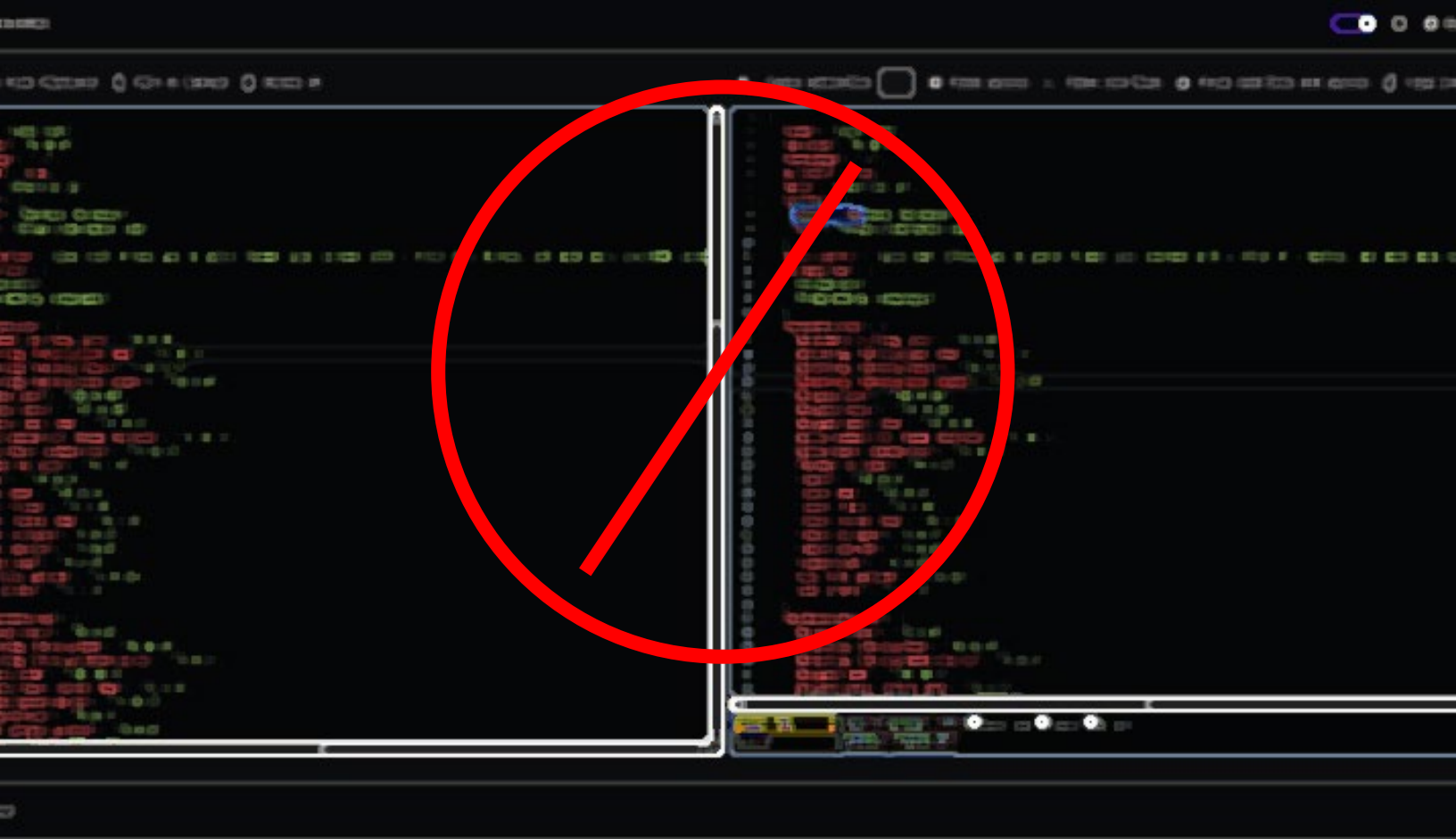
- ✓ **Drag and Drop** - anyone can build dashboards in seconds.
- ✓ **Powerful Historical Graphing** - create complex graph stacks connected to a single zoom/pan control.
- ✓ **Export Friendly** - download the graphs and/or raw data for incorporation into reports or analytics spreadsheets.



# Smart Alerts

User-configurable alerts provide real-time text/email communications when something goes wrong. Machine intelligence prevents false alarms by analyzing historical data to verify a problem is real.

- ✓ **Smart** - reduce false alarms using MI historical analytics
- ✓ **Stackable** - layer alerts to escalate notifications up the chain when a problem goes unresolved over time
- ✓ **Snoozeable** - snooze alerts when equipment is down for maintenance. Schedule snoozes for equipment that is not in constant use



# No Coding Required

Unlike other IoT platforms, Whisker.io® requires no special technical skills or knowledge to use.

- ✓ **Intuitively Plug-and-Play** - learn to use our platform in minutes.
- ✓ **No Coding Required** - drill down and drag and drop user interfaces let you add new locations/devices and customize the UI/alerts with zero code.
- ✓ **3<sup>rd</sup> Party Support** - integrate with Azure, AWS, and other MQTT capable 3<sup>rd</sup> party applications or use our API to build your own.



## Ask For A Demo Today

This datasheet provides a very basic overview of the power and capabilities of the Whisker.io® IoT platform. Call or email us today and schedule a demonstration - we would love to show you how easy to use yet powerful our platform is.



1-844-365-8647



[sales@d6labs.com](mailto:sales@d6labs.com)



[www.d6labs.com](http://www.d6labs.com)

